

# ONE199



## FEATURES

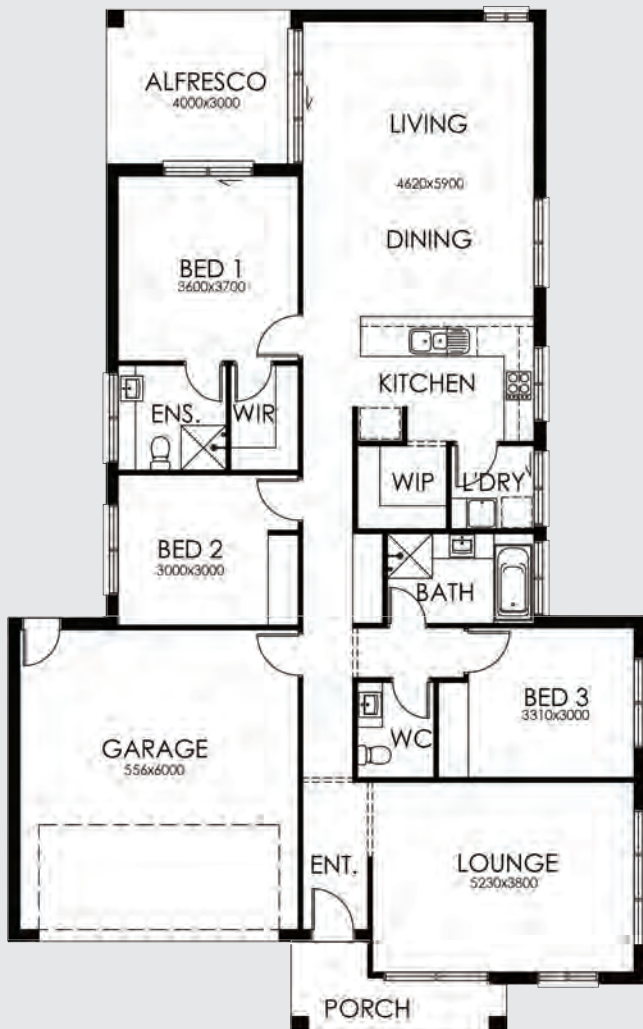
- 3 Bedrooms
- Large Living/Kitchen/Dining Area
- Double Lock-Up Garage
- Outdoor Alfresco
- Ensuite & WIR

## AREA SPECIFICATIONS

|             |                       |
|-------------|-----------------------|
| Living Area | 145.96 m <sup>2</sup> |
| Porch       | 5.92 m <sup>2</sup>   |
| Garage      | 36.66 m <sup>2</sup>  |
| Alfresco    | 11.40 m <sup>2</sup>  |

**TOTAL** 199.94 m<sup>2</sup>

Width 12.75m and Depth 20.49m



**Ph. 0414 980 572**

[www.coastalbuildersnsw.com.au](http://www.coastalbuildersnsw.com.au)  
[enquiries@coastalbuildersnsw.com.au](mailto:enquiries@coastalbuildersnsw.com.au)